



3S LIFT Offshore Davit Crane

Wind turbine cranes specially designed for the harsh marine environment

customer service hotline

+49 1727946719

CONTENTS





01

Company Introduction

01

02

Product Introduction

03

03

Application Cases

13

04

After-Sales Service

17

01 / Company Introduction

Ficont Industry (Beijing) Co., Ltd. is a China-based leading provider of equipment and services for people working at height. Our products have been applied in **17** different industries and exported to more than **70** countries. Our core business is the wind industry. With our strong focus on R&D, we have been granted for more than **600** patents and obtained over **100** global safety qualification certificates. We strive to support our customers and makes a better future in the field of working at height.

With more than **900** employees, including more than **100** foreigners, 3S LIFT has a head office in Beijing, factory in Tianjin, and wholly-owned subsidiaries in Dallas (USA), Hamburg (Germany), Chennai (India), Tokyo (Japan), and Jaraguá do Sul City (Brazil). It has after-sales service networks around the world, and has global equipment installation and maintenance capability, achieving quick, stable, and professional technical support, and providing end-to-end one-stop service.



| Beijing Headquarters



| Factory in Tianjin



| North America Branch in Texas



150,000⁺

Applications in WTG tower



100⁺

Global Qualifications



600⁺

Global Patents



70⁺

Country Markets



| Europe Branch
in Hamburg



| India Branch
in Chennai



| Japan Branch
in Tokyo

02 / Product Introduction

| Product Usage

The 3S LIFT offshore crane is a special lifting device intended for transferring materials (spare parts, maintenance materials, etc.) between a service vessel and outside platform of the WTG tower. It significantly reduces labor intensity, and improves maintenance efficiency and operation safety.

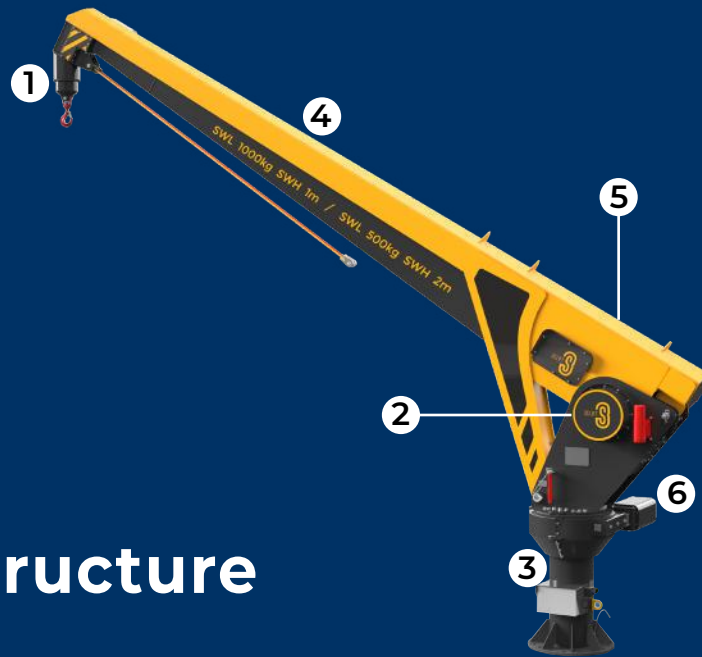
Equipped with high-quality components, the crane has a strong and reliable life cycle and adapts to the harsh marine environment. Meanwhile, it is sturdy and durable, with high safety, reliability and lasting corrosion resistance. It has a high level of shock resistance and bearing capacity, even in harsh conditions, and is designed with more than 35 years of service life.

The crane adopts an ergonomic design structure, which is highly comfortable and can easily lift and transport heavy objects, ensuring efficient supply and maintenance of spare parts for maximum efficiency.

| Industrial Advantage

3S LIFT is one of the earliest manufacturers in China engaged in development and applications of offshore cranes. In 2012, we successfully installed a crane in the offshore project of an internationally renowned OEM. This crane serves offshore wind turbines with more than 12 GW in capacity. 3S LIFT also has more than 13 years of experience in lifting and transporting solutions for offshore davit cranes, an industry-leading scientific research team of more than 100, and more than 3,000 offshore davit crane applications, ranking first in the Asia-Pacific market.





| Product Structure



Lifting Hook Limit Switch

The top limit switch enables the hook to slowly stop after reaching the intended position.

It has a special wire rope outlet space and the position is highly adaptable. It has a special design to reduce abrasion caused by wire ropes, extending its service life.



Lowering Limit Switch

The lowering limit switch enables the hook to slowly stop after reaching the intended position.

It can record the position and stop reverse rolling.



Supporting Column

A component supporting the whole equipment, designed with high strength. It is installed on the base of outer tower platform. The column flange can be customized.



Boom Assembly

A hexagon variable cross-section structure design with high strength.

CX-class corrosion resistance (ISO12944-9).

The slewing radius can be customized as required.



Drive Unit

The wire rope storage position and power source of the whole device.

Designed with a winch drum inside, the gearbox has a simple and compact structure.

Its LEBUS rope groove has a special wire rope pressure mechanism and slack rope limiter mechanism.



Slewing Bearing Assembly

The high-precision slewing bearing ensures smooth operation.

The self-locking design resists gusts up to 70 m/s.

The electric and manual slewing bearings are easy to use and convenient.



Wireless remote control

Start and operate the device through a wireless remote control. The remote control is equipped with a display screen, which can display real-time load and height information, and provide a visual operating experience, making the operation more conveniently and efficiently.

| Product Feature



Patents

35

Technology based on
35 patents



Certifications

CE Certification (by SGS)
EMC Certification
China Classification Society
(CCS) Certification
DNV-GL Certification



Standards

MD 2006/42/EC
EMC 2014/30/EC
EN 13852-1
EN 13852-3
EN ISO 12100
EN 60204-1
ISO 12944
DNV GL-ST-0378

PRODUCT
FEATURES



Ultra-high anti-corrosion protection

The crane has CX-class corrosion resistance, making it suitable for all-weather marine environment.

Customizable safe working load

The safe working load can be customized according to customers' needs to facilitate lifting and transporting large WTG components.

Self-locking protection function

The self-locking slewing bearing is an independent mechanical locking mechanism and can resist gusts up to 70 m/s.

Anti-twisting wire rope

The anti-twisting wire rope can stop rotation of the lifting object and reduce wire rope damage and breakage, with excellent corrosion resistance at the same time.

Overload protection function

When a load between 100% and 110% of the rated load is applied, the winch drum will stop running automatically to ensure the safety of the operator and equipment.

Unique wire rope pressure mechanism and slack rope limiter mechanism

The unique wire rope pressure mechanism and slack rope limiter mechanism keep the wire rope in order. The lifting hook stops immediately when reaching the ground, making the crane safe and reliable.

Automatic Overload Protection System (AOPS)

When the crane's hook becomes entangled with the vessel, leading to an overload, the AOPS is automatically activated. As this occurs, the winch drum releases the rope, accompanied with an audible and visual alarm. This system prevents significant damage to the crane in the event of an overload.

Emergency Load Lowering Function (ELL)

The ELL function is activated by the operator, and is used to slowly and safely lower the suspended load to the supporting level in case of sudden power failure or crane failure.

Distributed sealing protection design

The crane uses distributed sealing for its key parts. The wire rope, hoisting motion limiter, lifting motor and slewing bearing are all equipped with sealing housing, improves the waterproofing and corrosion resistance of the entire crane, and prolonging the service life.

Wireless remote control

The wireless remote control is equipped with a screen, which can display real-time load and height information during the operation, so that it can provide a convenient and efficient visualization experience for users.

Obstacle avoidance function

By preset the position of obstacles, ensure that the hook reaches sufficient height to safely cross the obstacles before turning. The crane will stop slewing when the height requirement is not met, so that the crane will avoid collision risks effectively and make operation safer.

Star Product Offshore Davit Crane

OC-5010

Safe working load	500kg/1,000kg
Lifting speed	20m/min or 36m/min
Slewing radius	5m
Max. slewing angle	350°
Max. lifting height	30m
Wire rope diameter	11mm
Power supply	400V/690V
Rated power	8kW
Service life	35 years
Operating temperature	-20°C to 45°C
Max. wind speed	18m/s
Max. significant wave height	2m



Product Range

Standard model						
Product model	Slewing radius	Safe working load	Lifting speed	Lifting height	Wire rope diameter	Operating temperature
OC-2	2.1m	1,000kg	18m/min	≤25m	φ11mm	-20°C to 45°C
OC-2516	2.5m	1,600kg	24m/min	≤28m	φ12mm	-20°C to 45°C
OC-3010	3m	1,000kg	24m/min	≤25m	φ11mm	-20°C to 45°C
OC-4010	4m	1,000kg	24m/min	≤25m	φ11mm	-20°C to 45°C
OC-5010	5m	1,000kg	36m/min	≤25m	φ11mm	-20°C to 45°C
OC-5016	5m	1,600kg	24m/min	≤28m	φ12mm	-20°C to 45°C
OC-7010	7m	1,000kg	36m/min	≤25m	φ11mm	-20°C to 45°C
OC-8010	8m	1,000kg	40m/min	≤30m	φ11mm	-20°C to 45°C

NAMING CONVENTIONS
(using the OC-5010 as an example)

OC - 5010

- 10: Safe working load 1,000 kg
- 50: Slewing radius 5.0 m
- OC: Offshore Crane

The above specifications can all be customized.



OC-2



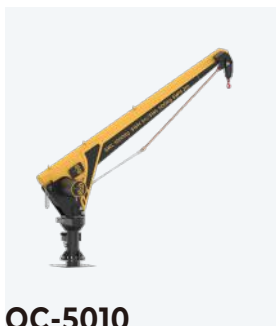
OC-2516



OC-3010



OC-4010



OC-5010



OC-5016



OC-7010



OC-8010



Danger !

3S LIFT



| Product Value

Safe

- AOPS and ELL functions meet the EN13852-3 standard
- Lowering limit switch and slewing motion limiter
- Obstacle avoidance function to avoid collisions with obstacles during lifting operations.
- Several emergency stop buttons in various locations which cannot be reset automatically
- Power-off brake works in case of power-off
- Slewing mechanical lock function
- Automatic speed change function for lifting
- The column is equipped with an anchor point.

Easy-to-use

- Plug-and-play design is easy and convenient.
- Ergonomic wired remote control and easily operated interface.
- Manual/automatic slewing design for ease of operation.
- The wireless remote control is equipped with a screen, which can display real-time load and height information during the operation, so that it can provide a convenient and efficient visualization experience for users.

More efficient

- Lifting speed up to 40m/min and automatic speed change design, improving working efficiency.
- The strict FEMA analysis and quality control system ensure good product quality and low failure rate.

Environmental protection design

- With a pure electric design, the crane achieves zero carbon emissions, fulfilling green commitments and promoting sustainable development.
- The low-noise design is friendly to operators and the marine environment.
- The general AC/DC contactor conforms to the Green Premium™ ecological certification.
- Components meet the RoHS and REACH EU environmental protection standards.

03 / Application Cases

The 3S LIFT offshore davit crane ranks first in domestic market share and has been widely applied in many provinces and municipalities in China, such as Guangdong, Fujian, Jiangsu, Liaoning, Shanghai and Hunan. It is also ranked first in Asia-Pacific market and been widely applied in Vietnam, Japan and other countries.

NO.1

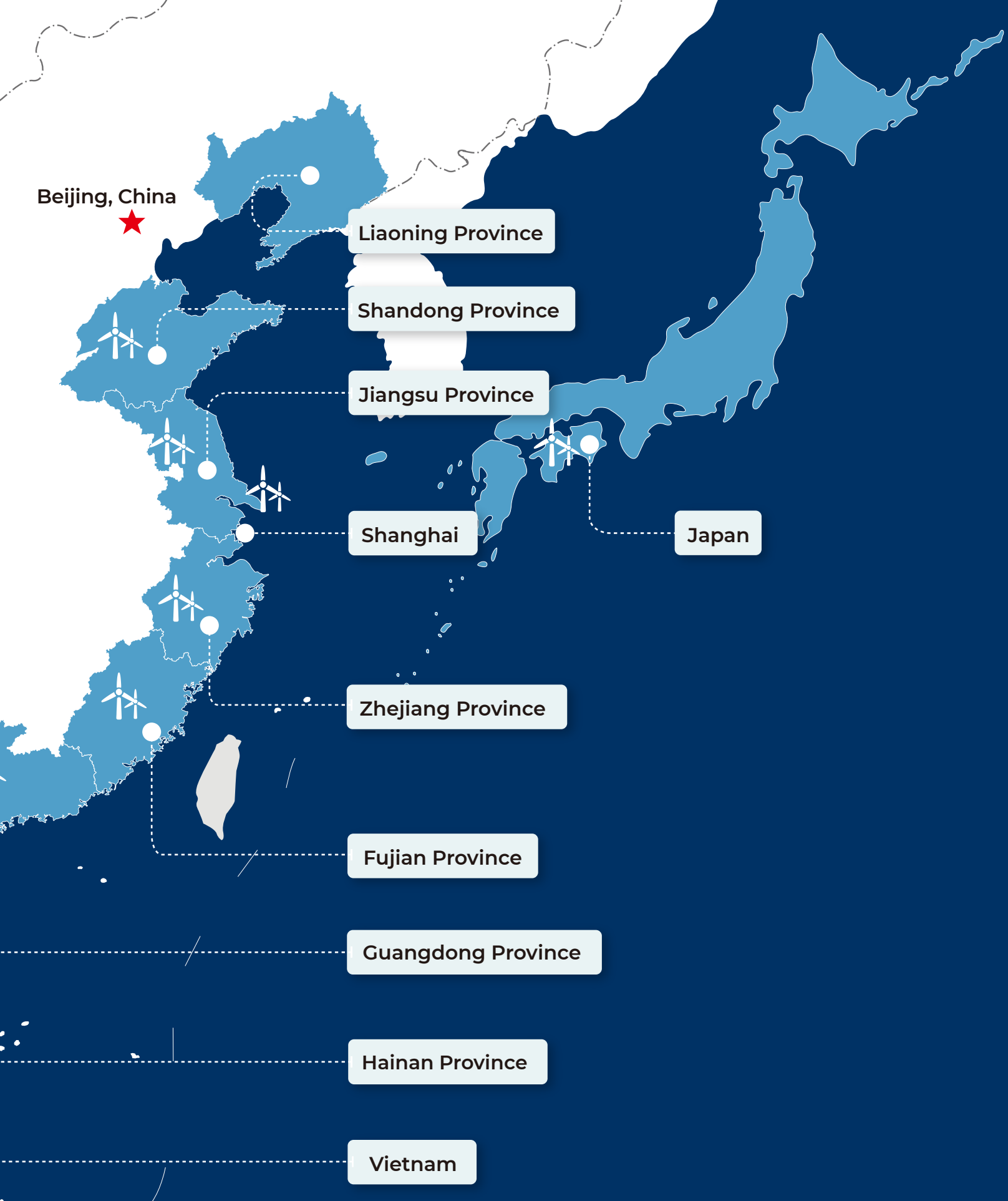
Chinese market

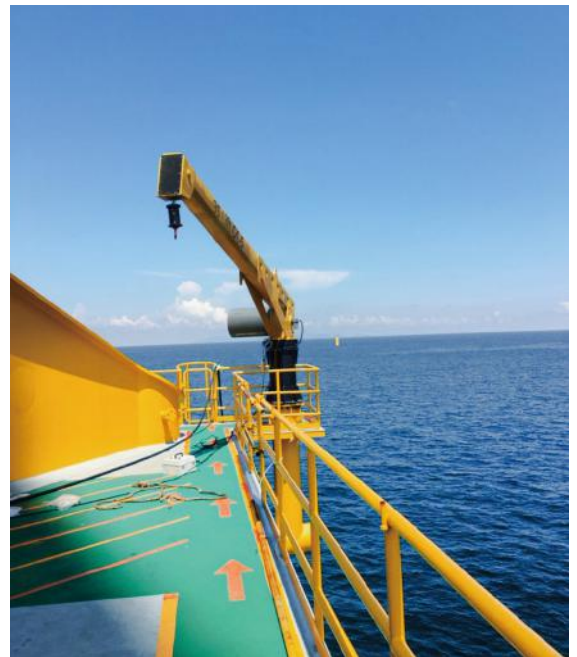
NO.1

Asia-pacific market

3000+

**Offshore crane sales volume
in the Asia-Pacific region: 3,000+**







04/ After-Sales Service



Delivery

3S LIFT has factories in Beijing, Tianjin, China and Germany.
The product will be delivered to the designated place within **8-12** weeks after the contract signing.



Installation

3S LIFT provides professional guidance on installation and operation (including an installation and commissioning manual, operation manual, and operation and usage video).



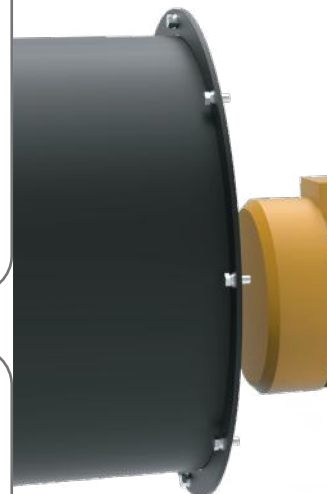
Training

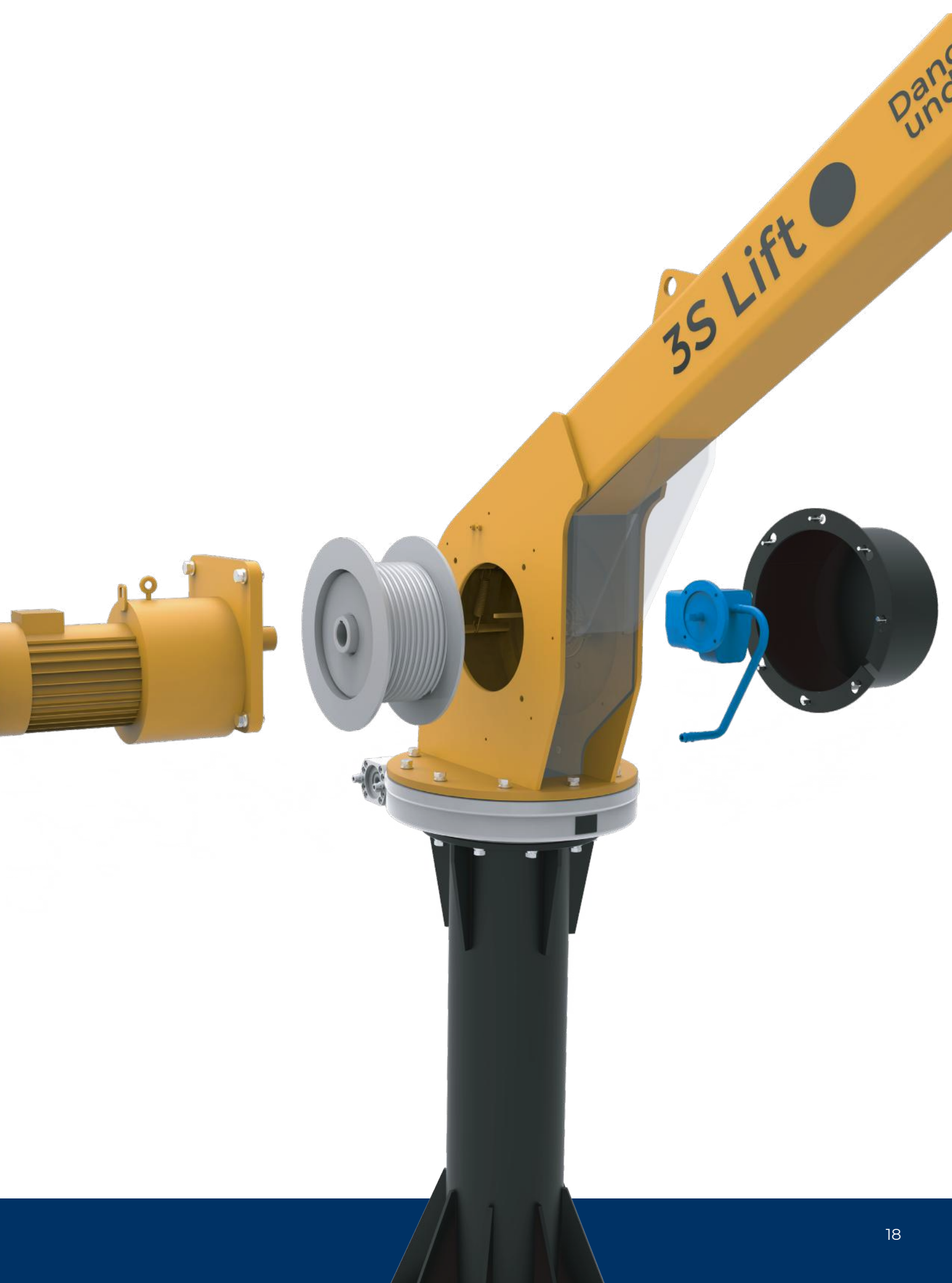
Video training course
Indoor online video training
Outdoor on-site training



Maintenance

3S LIFT provides maintenance and guidance service and parts and components during the entire service life of the crane (it can also provide on-site annual inspections and regular maintenance).







Global Services

32

32 provincial
administrative regions

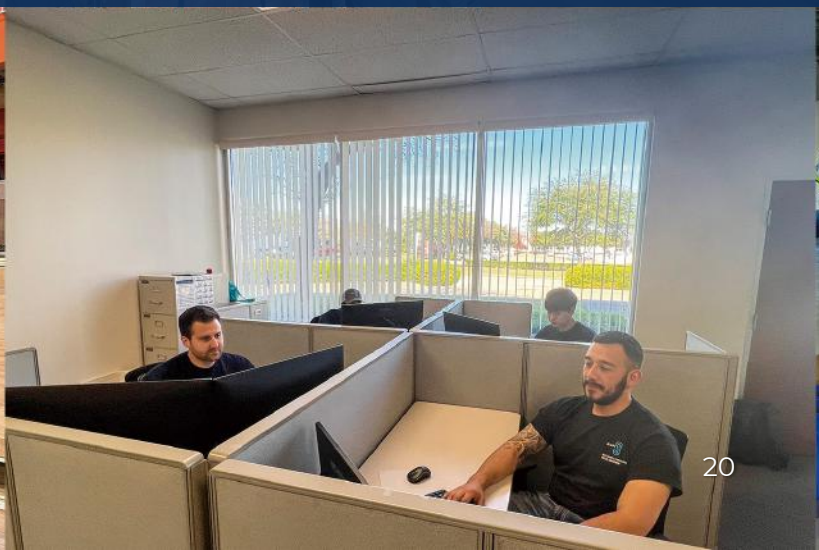
72

72 countries



19

19



20



Service Standard

12_h

Quick responses
in 12 hours

24_h

Solutions
in 24 hours

48_h

Arrival at the task
site in 48 hours





www.3sindustry.com

Ficont Industry (Beijing) Co., Ltd.

No. 11 Tongji South Road,
Jingkai District,
+86 10 69597866
info-china@3sindustry.com

3S Americas, Inc.

2920 Telecom Parkway,
Suite 400, Richardson,
TX 75082, USA
+1 972 849 3210
info@3SAmericas.com

3S Europe GmbH

Hein-Saß-Weg 21,
21129 Hamburg Germany
+49 40 32518887
info@3SEurope.de

3S Lift India Private Limited

Workafella Business Center-SI,
Level 4, Tower A Rattha Tek
Meadows Old Mahabalipuram
Road, Rajiv Gandhi Salai,
Sholinganallur Chennai, Tamil
Nadu, India, 600119
+91 9600653379
info-india@3sindustry.com

3S Japan Co., Ltd.

#B1F Bright Akihabara 1-24-9
Taito, Taito-Kaku, Tokyo,
110-0016 Japan
+81 (90) 4602 3955
info-Japan@3sindustry.com

3S LIFT BRASIL LTDA

Jorge Czerniewicz street,
1020, Room 01, Czerniewicz
zone, CEP 89.255-000,
Jaraguá do Sul City, Santa
Catarina State.
+55 11 97847-8584
info-brasil@3sindustry.com